



# Industrial Contractors' Supplies, Inc.

- Dust Director Division -

15061 Route 30, N. Huntingdon, PA 15642

Phone: 412 . 824 . 6933

Fax: 412 . 824 . 4704

www.dustdirector.com

## SURFACE DUST GUARDS (2)

Work Easy With The *Corner & Edging* Surface Dust Guards  
- Installs onto Your Angle Grinder or Polisher -

### 7" SURFACE *EDGING* DUST GUARD

Fast Grinding & Wall Edging



### 5" SURFACE *CORNER* DUST GUARD

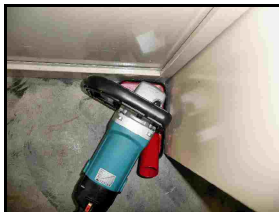
Grinding & Polishing Edges



Corner Guard design allows grinding and polishing into a corner with no dust problem as easily and tightly as if there was no shroud at all.



5" Surface Corner Dust Guard



Smooth and effortless grinding. **HD Steel Guards** glide across concrete floors like a Hoover craft on a cushion of air.

#### **A+ Dust Control & Handling**

Extracts over 95% of the dust off the floor.

Unlike similar guards, the Surface Dust Guard does not touch the floor - only the diamond wheel does, as it should be.

The adjustable rubber seal controls dust from escaping. When used with a low rpm (variable speed) grinder, the rubber seal may not even be needed.

Available in 5" and 7", each one has a straight edge for grinding floors along a wall.



Guards includes an assortment of insert collars for installing onto your angle grinder.

**Surface Dust Guards with Angle Grinder & Vacuum Combo Kits Available**

(See Dust Control Combination Price List)